

Elmia Subcontractor 2024

# DEA Subcontractor



# Table of Contents

Cover	1
Table of Contents	2
3D View 1	3
3D View 2	4
3D View 3	5
3D View 4	6
Floor Plan	7
Your graphic measurements	8
B04-33	9
B04-40	10
B04-32	11
Elevations	12
Info	13

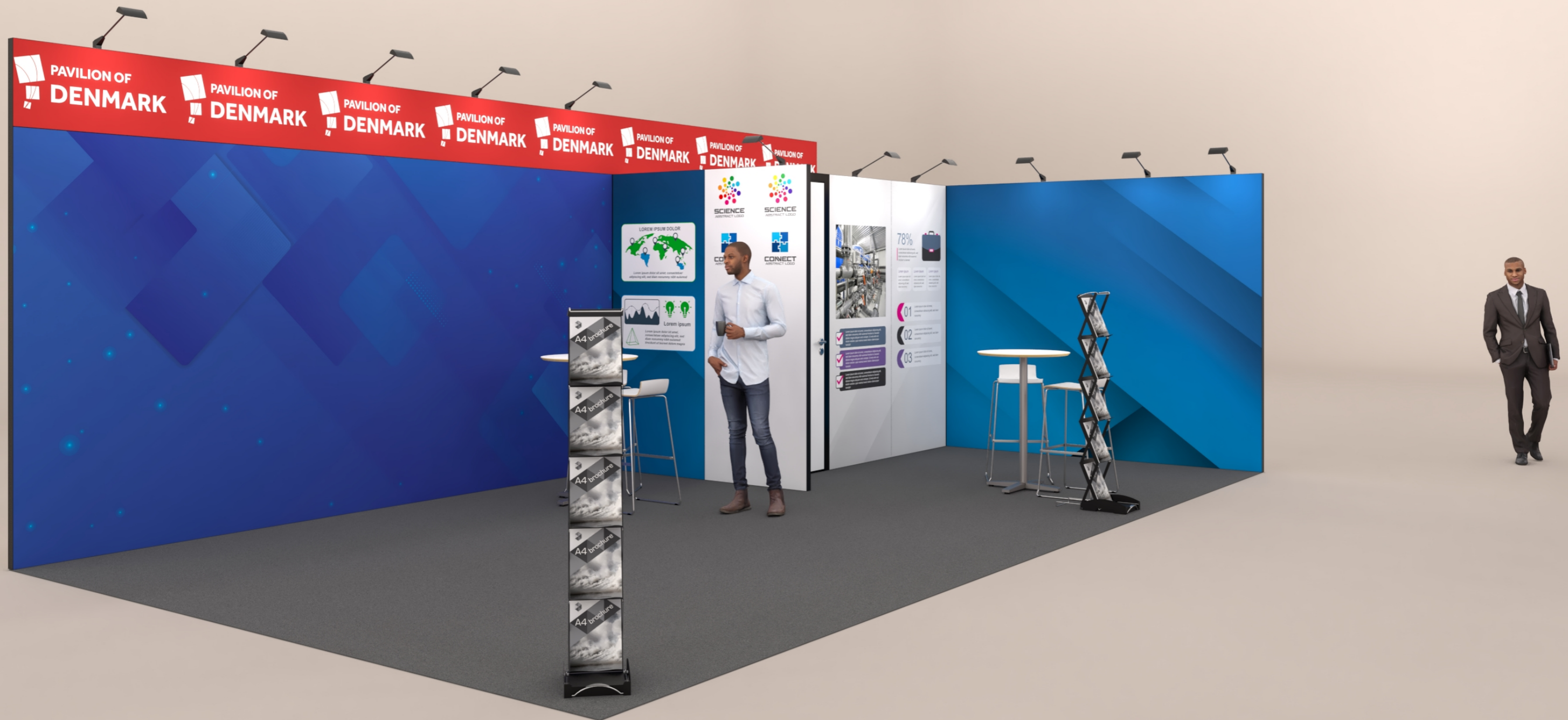
# 3D View 1



# 3D View 2



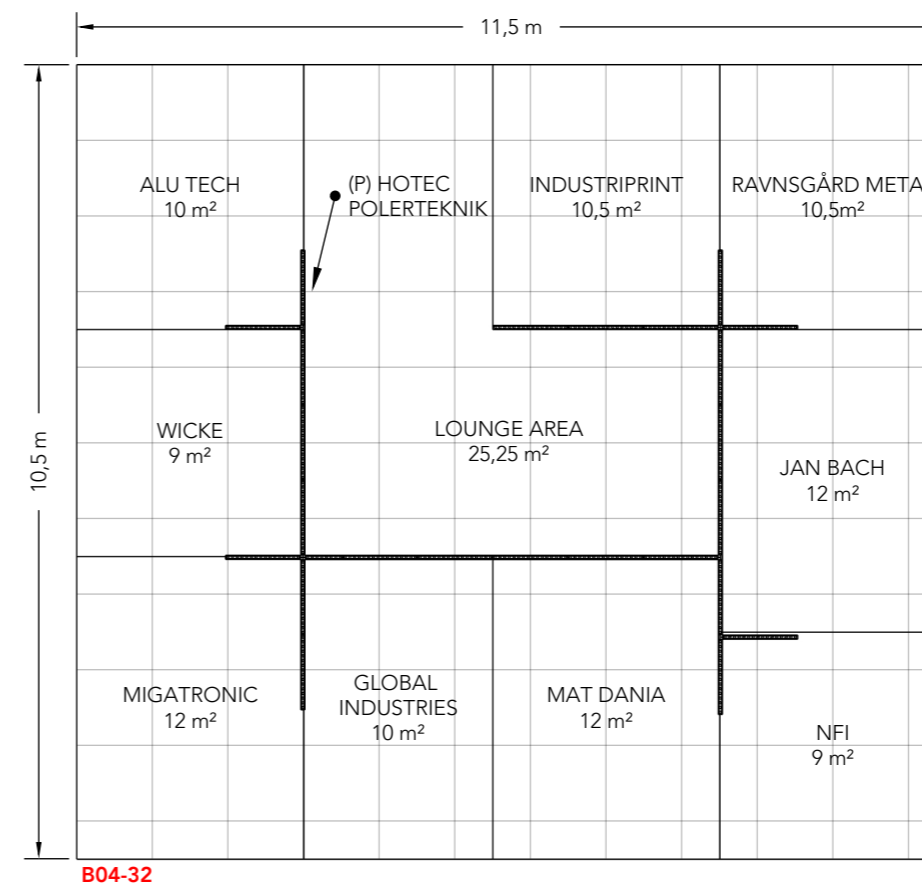
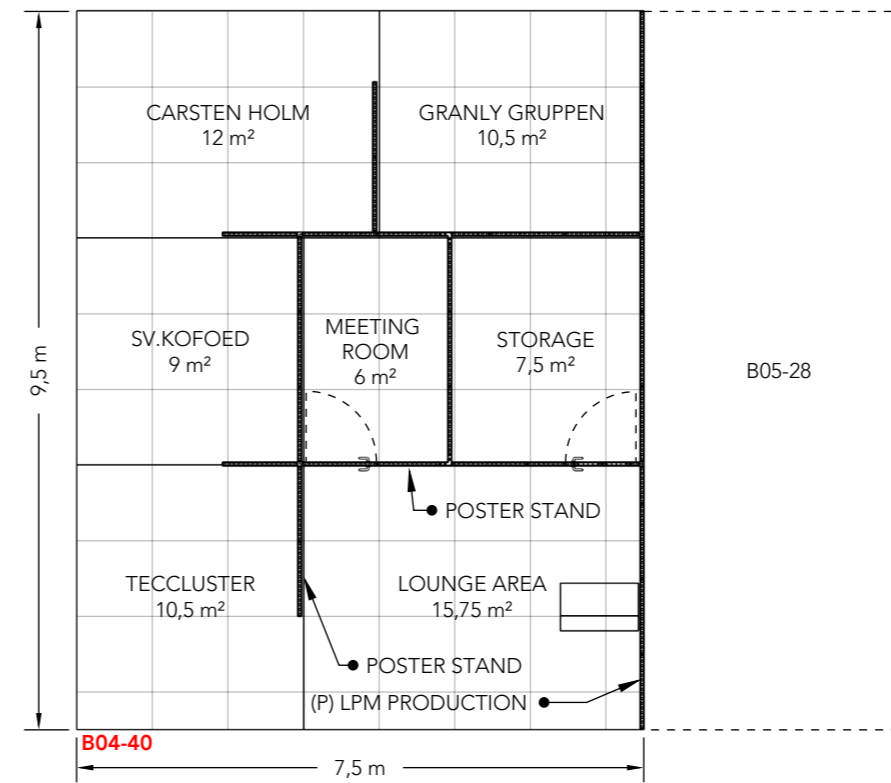
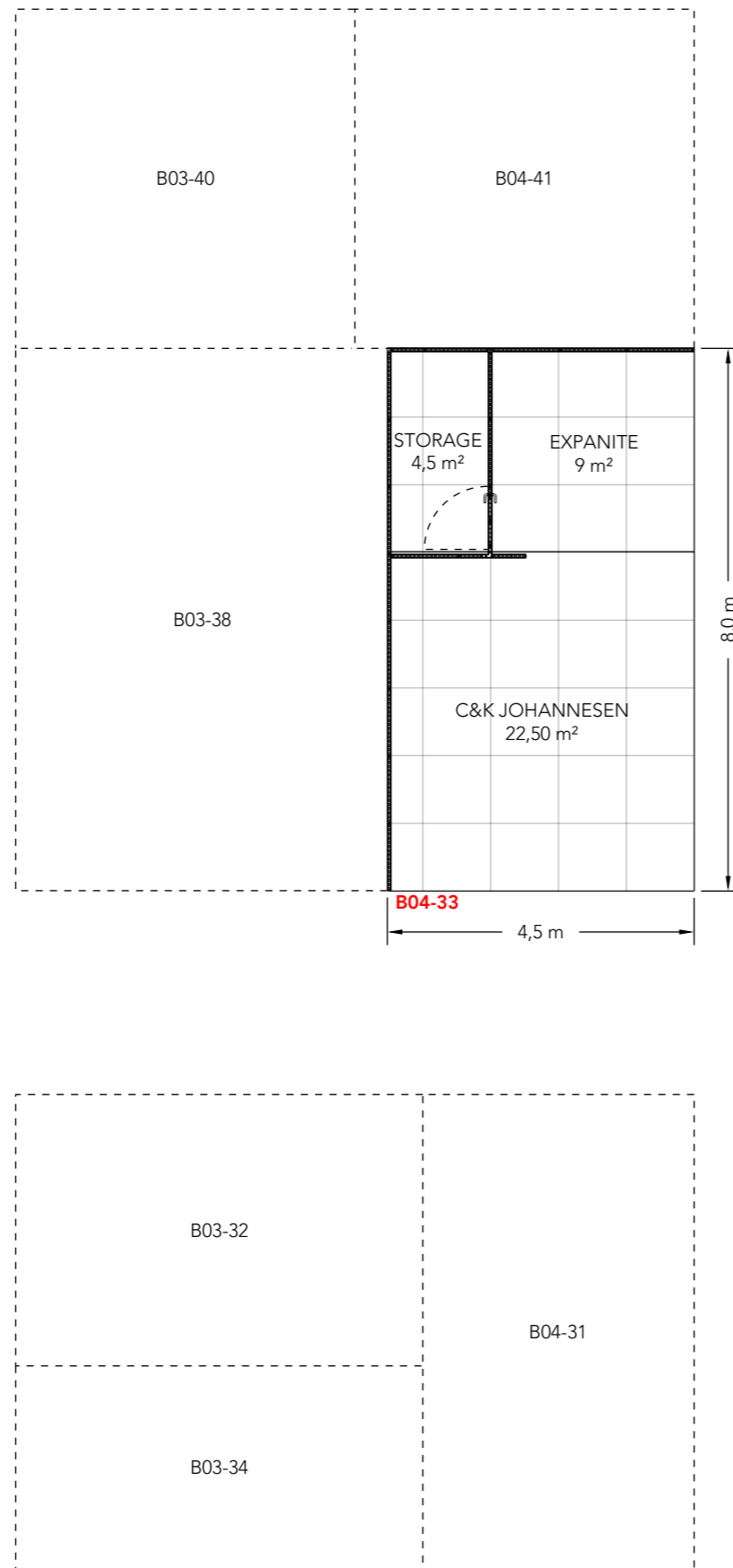
# 3D View 3



# 3D View 4



# Floor Plan



(P) - Poster stand

# Your graphic measurements

## Page 9 - B04-33

EXPANITE

C&K JOHANNESSEN

DEA STORAGE

## Page 10 - B04-40

LOUNGE AREA

DEA STORAGE

DEA MEETING ROOM

CARSTEN HOLM

GRANLY GRUPPEN

LPM PRODUCTION

SV. KOFOED

TECCLUSTER

## Page 11 - B04-32

ALU TECH

DEA LOUNGE AREA

GLOBAL INDUSTRIES

HOTEC POLERTEKNIK

INDUSTRIPRINT

JAN BACH

MAT DANIA

MIGATRONIC

NFI

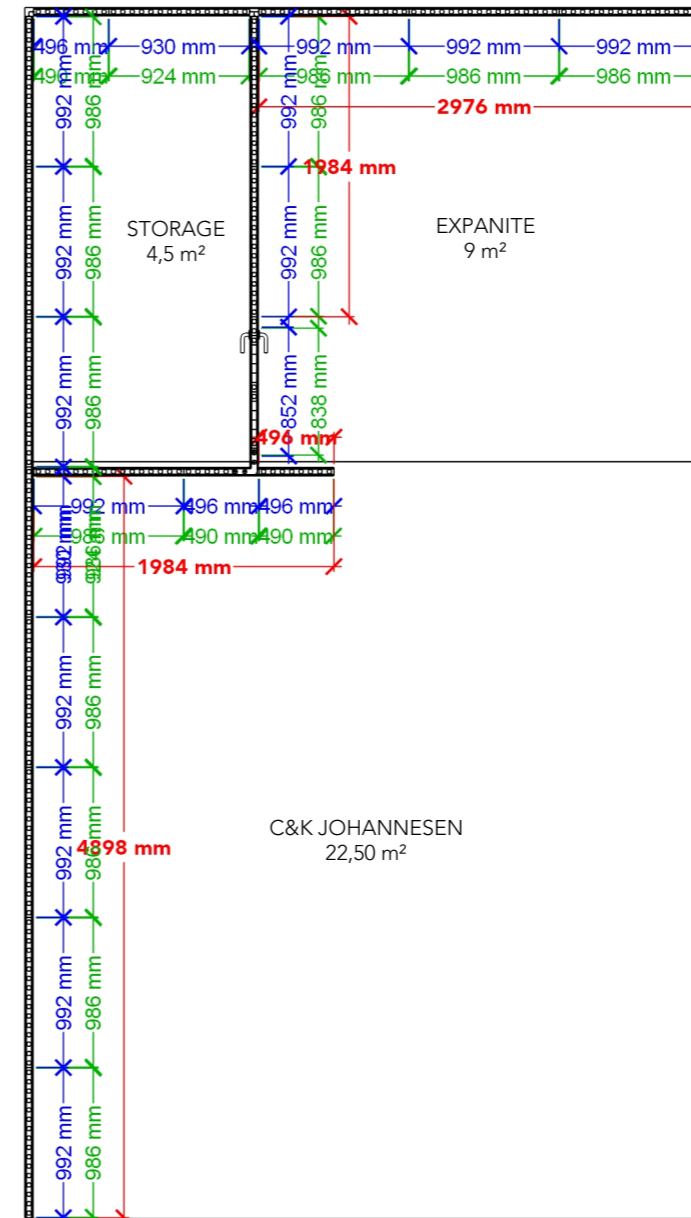
RAVNSGÅRD METAL

WICKE



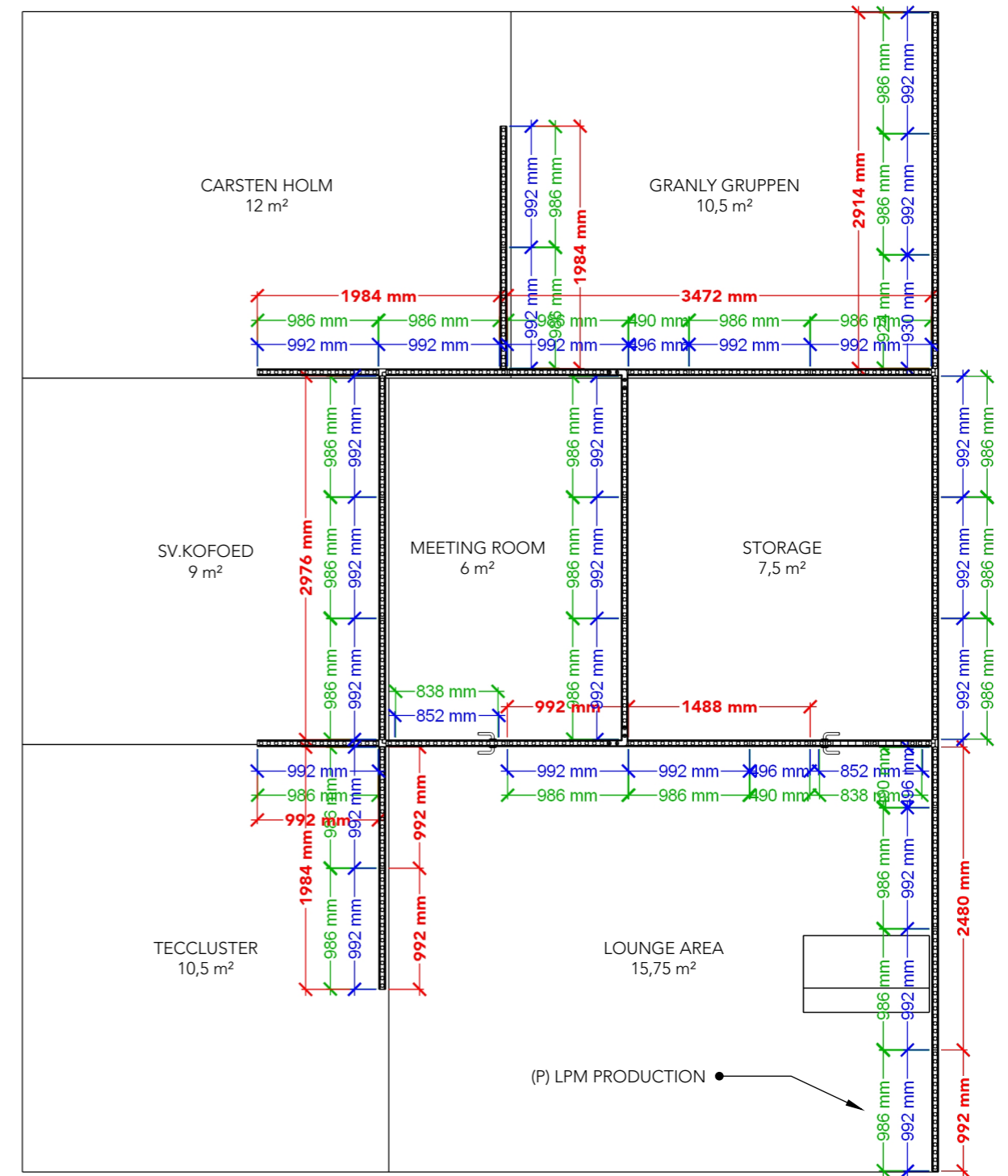
# B04-33

- Full size Fabric - Graphics height: 2480mm
- Single Frame Fabric - Graphics height: 2480mm
- Single Frame Panel - Graphics height: 2474mm



# B04-40

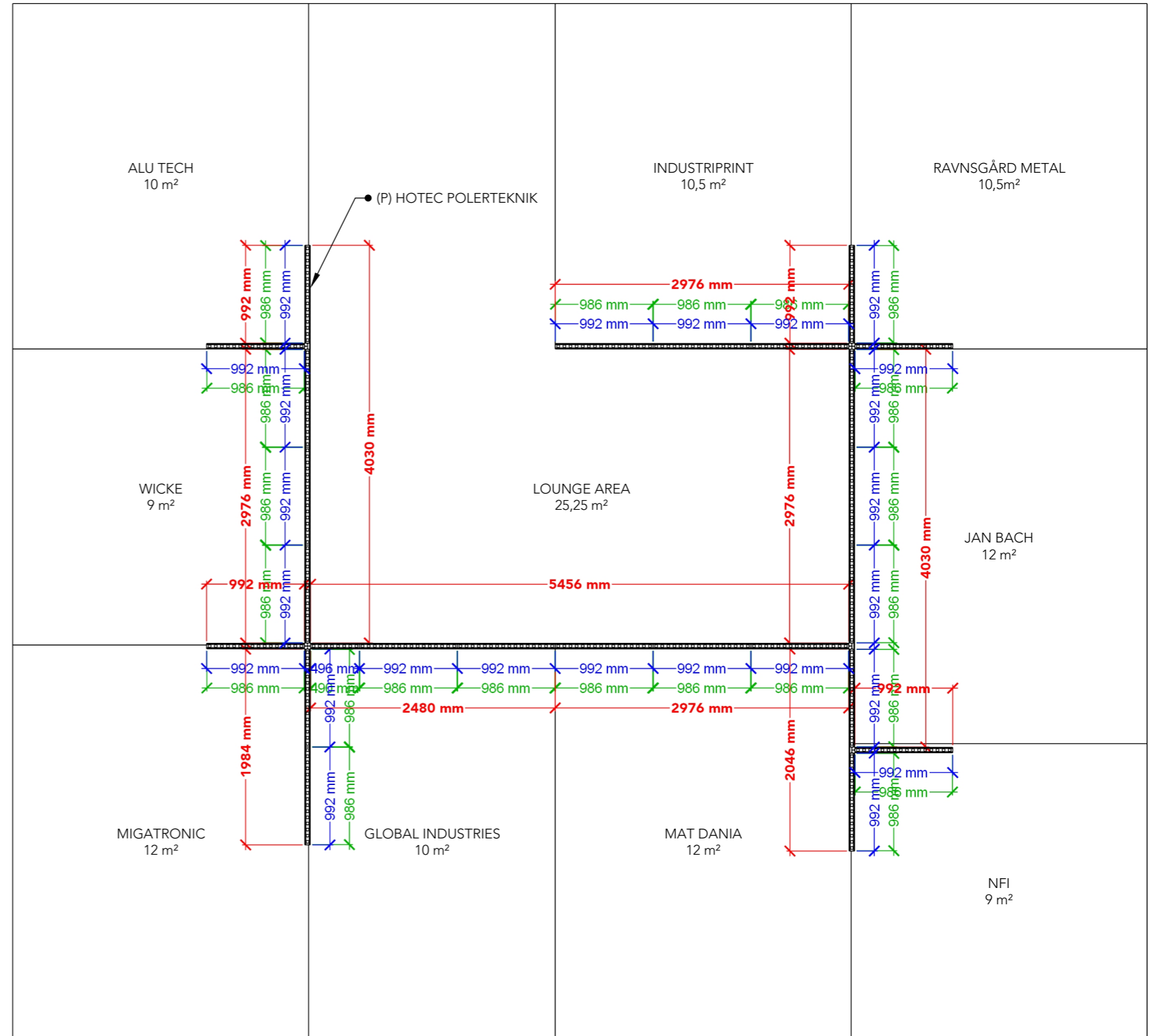
- Full size Fabric - Graphics height: 2480mm
- Single Frame Fabric - Graphics height: 2480mm
- Single Frame Panel - Graphics height: 2474mm



Full size Fabric in Lounge Area are divided for Poster Stands

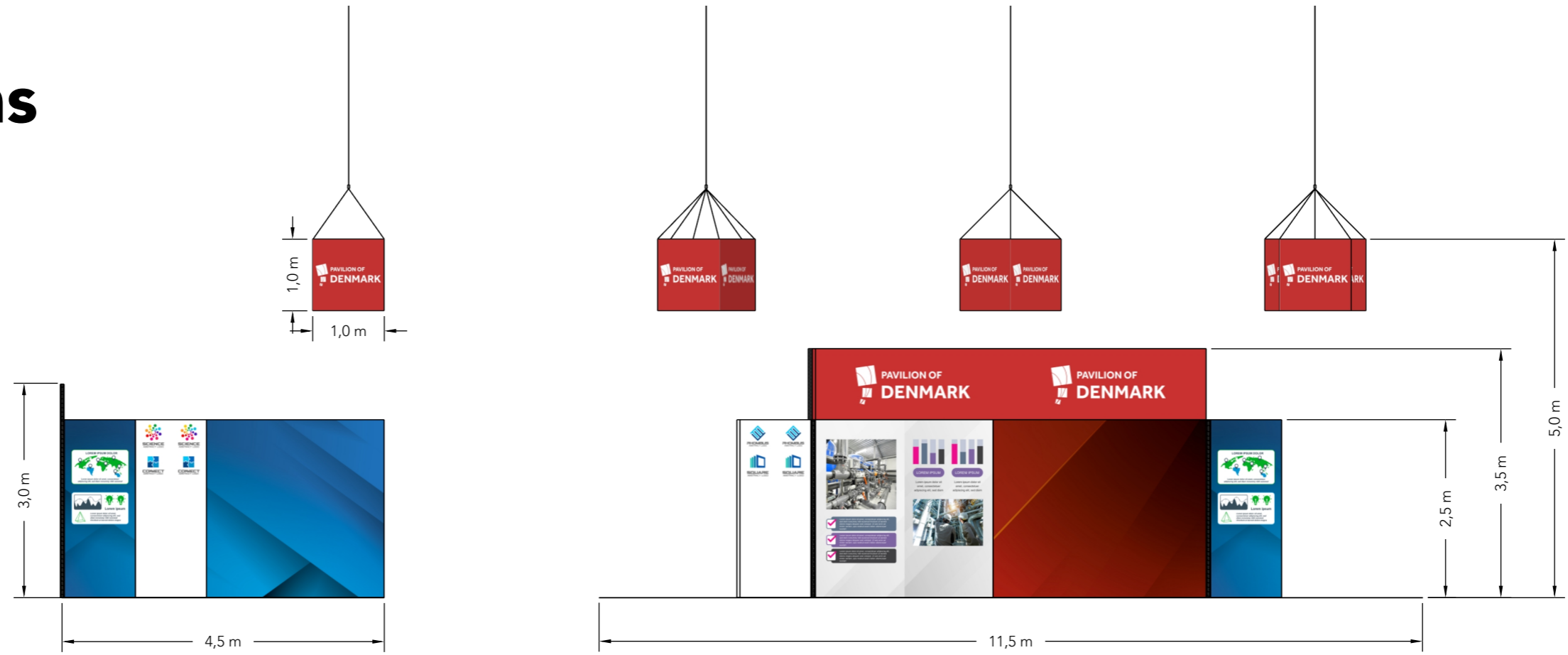
# B04-32

- Full size Fabric - Graphics height: 2480mm
- Single Frame Fabric - Graphics height: 2480mm
- Single Frame Panel - Graphics height: 2474mm

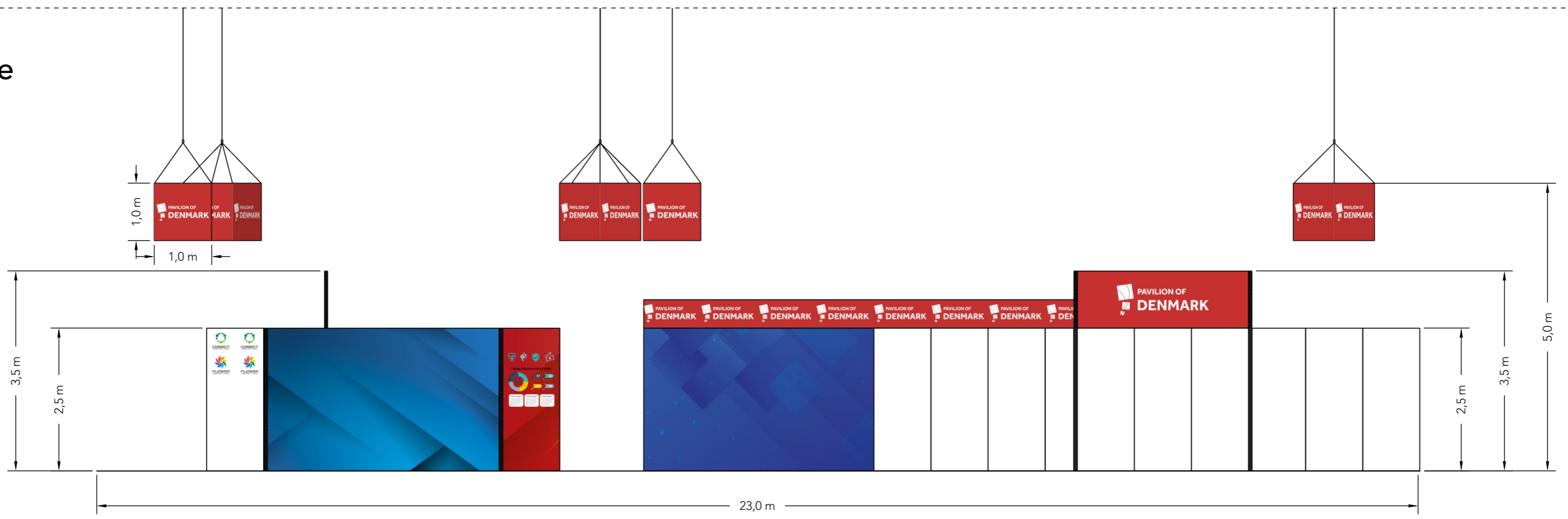


# Elevations

Front



Side



# Info

Client: DEA Subcontractor  
Exhibition: Elmia Subcontractor 2024

Project no.: DSU-ELM-24-11  
Designed By: THJ/SMM  
Hall: B04  
Booth: B04-32 - B04-33 - B04-40

Creation Date: 02.07.2024  
Revision Date: 09.10.2024  
Revision no.: G

Comments:

The drawing is indicative and without responsibility. The drawing is NOT to scale. The stand-builder will have the final call in all decisions regarding stability and security. Some products are only shown to indicate locations, but not the actual product as this product may be changed.  
All design is subject to copyright by Compass Fairs A/S and Standesign A/S

