

Elmia Subcontractor 2024

DEA Subcontractor

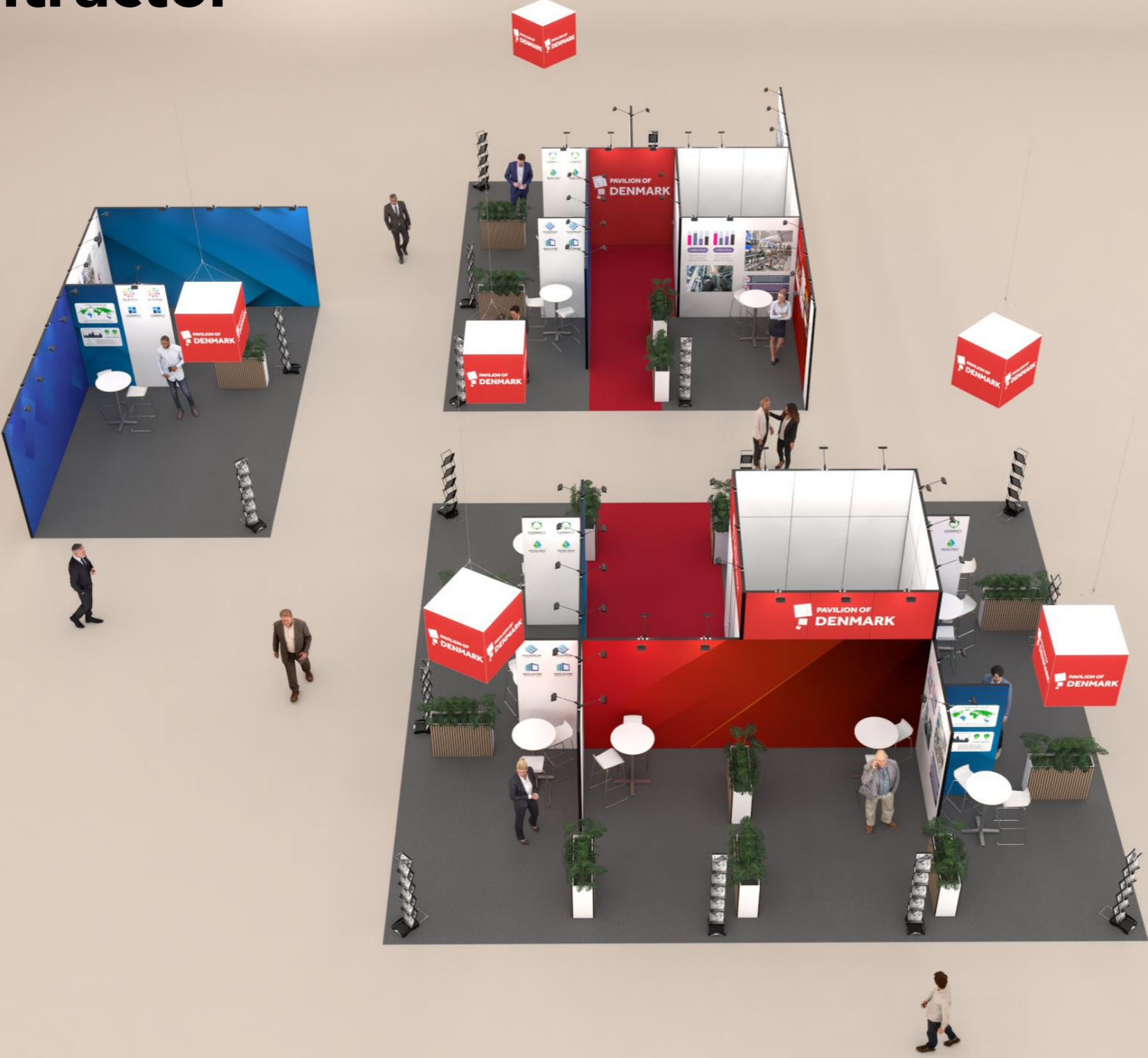


Table of Contents

Cover	1
Table of Contents	2
3D View 1	3
3D View 2	4
3D View 3	5
3D View 4	6
Floor Plan	7
Your graphic measurements	8
B04-33	9
B04-40	10
B04-32	11
Elevations	12
Info	13

3D View 1



3D View 2



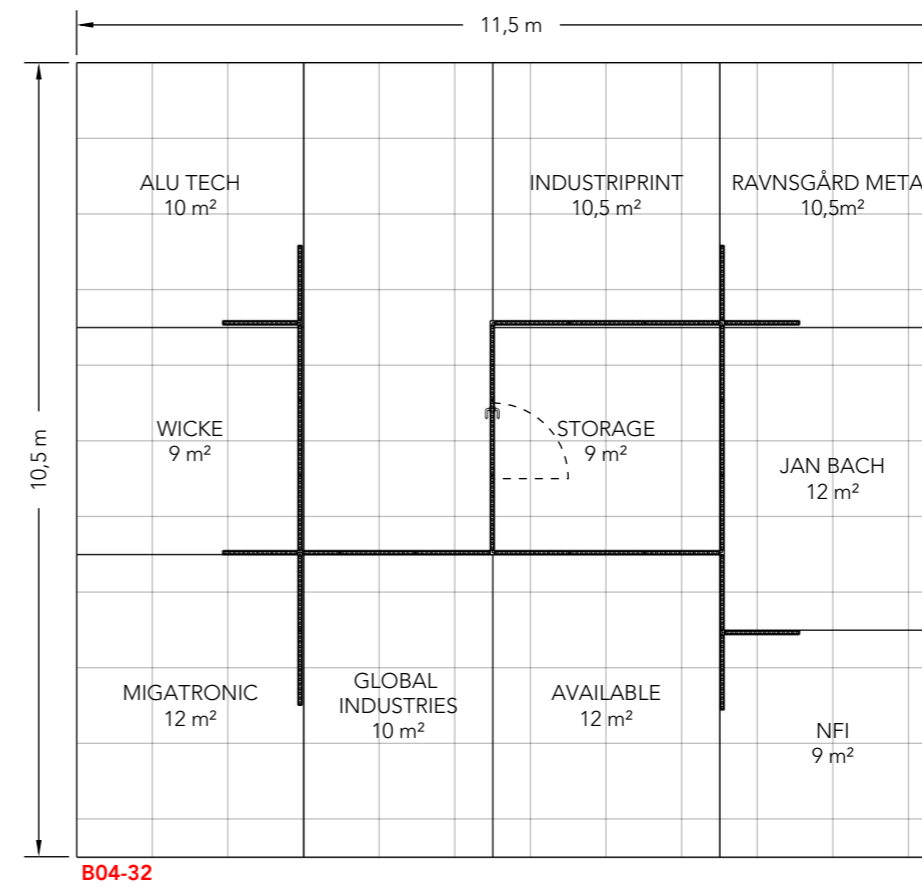
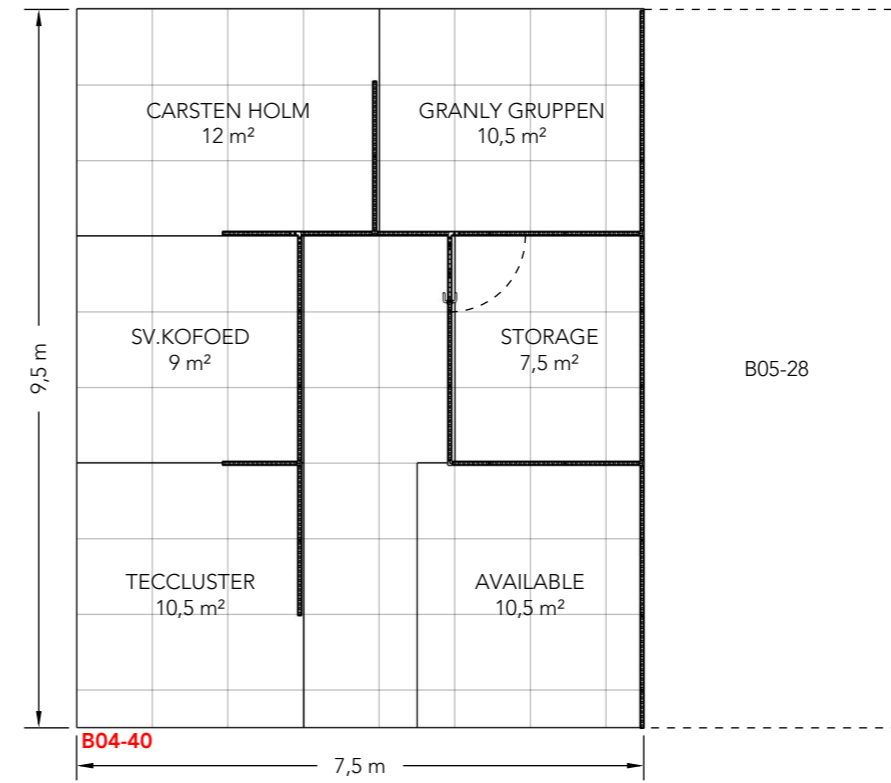
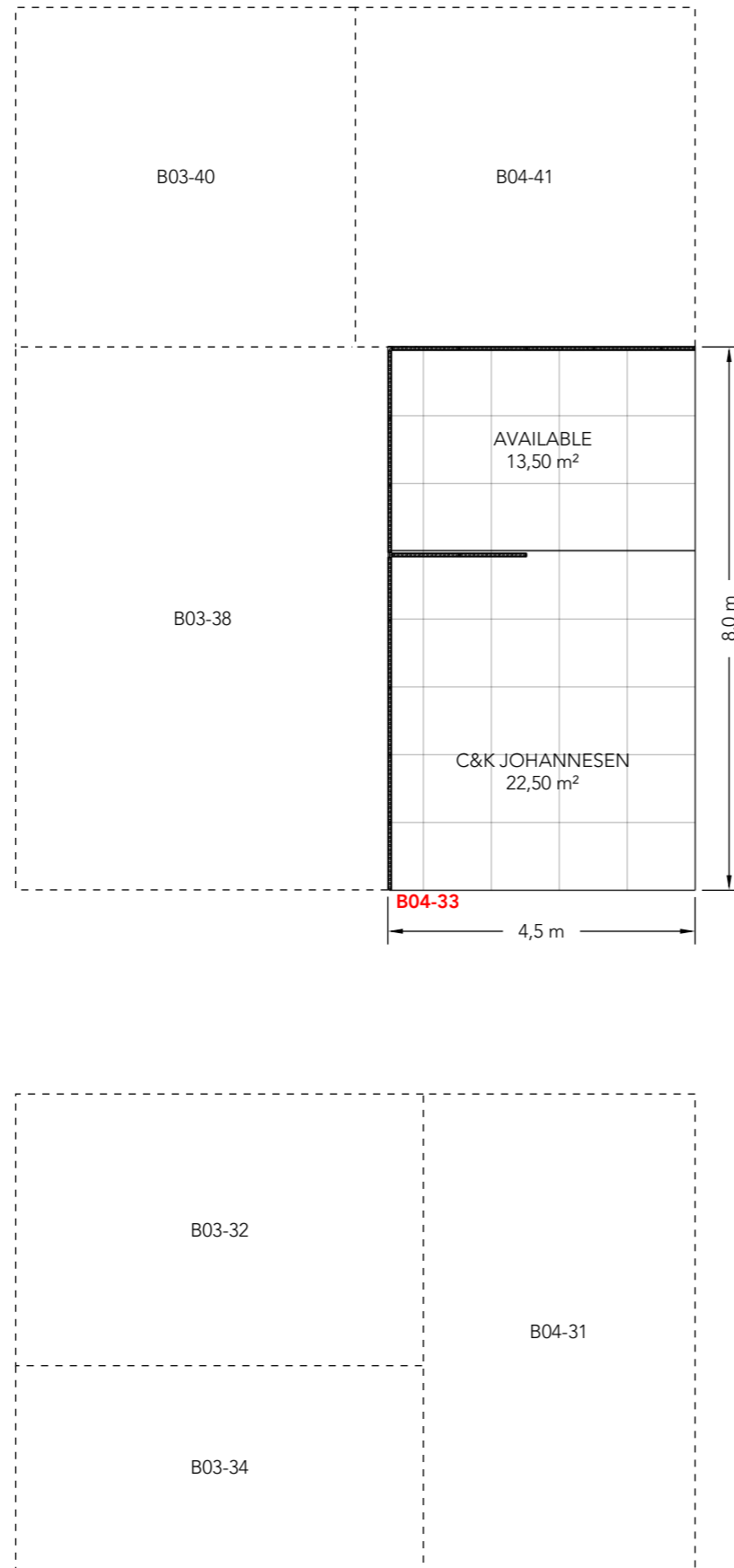
3D View 3



3D View 4



Floor Plan



Your graphic measurements

Page 9 - B04-33

AVAILABLE AREA
C&K JOHANNESSEN

Page 10 - B04-40

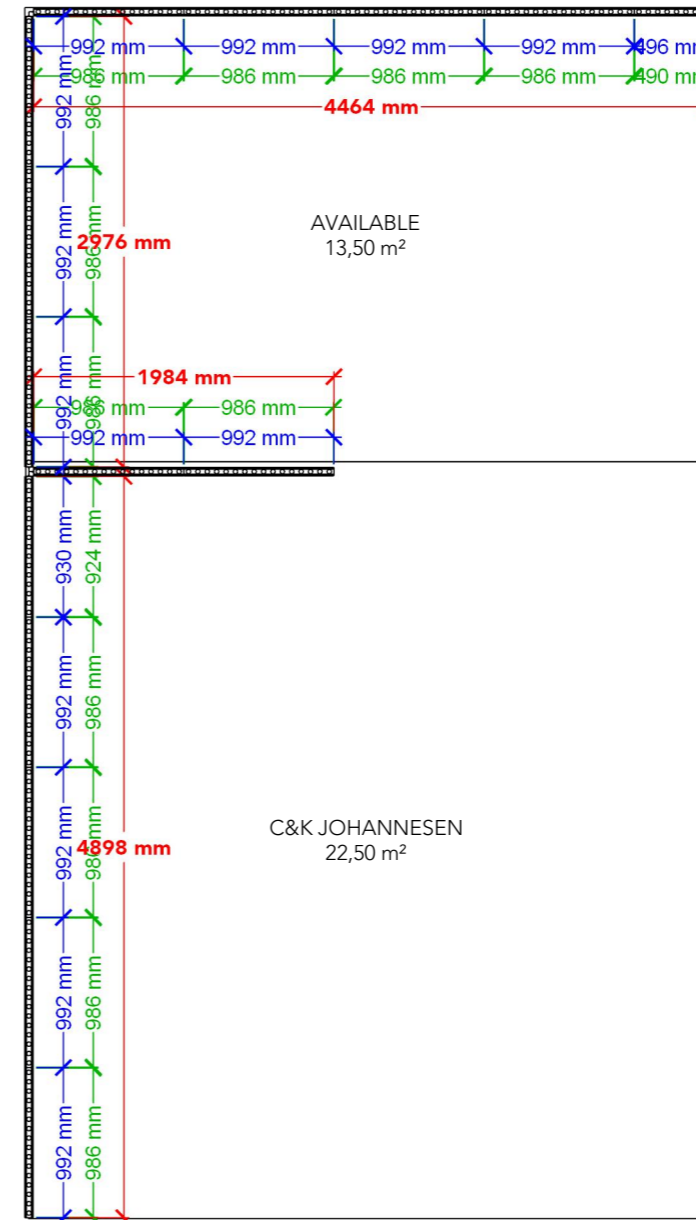
AVAILABLE AREA
CARSTEN HOLM
DEA STORAGE
GRANLY GRUPPEN
SV. KOFOED
TECCLUSTER

Page 11 - B04-32

2 x AVAILABLE AREA
ALU TECH
DEA STORAGE
GLOBAL INDUSTRIES
INDUSTRIPRINT
JAN BACH
MIGATRONIC
NFI
RAVNSGÅRD METAL
WICKE

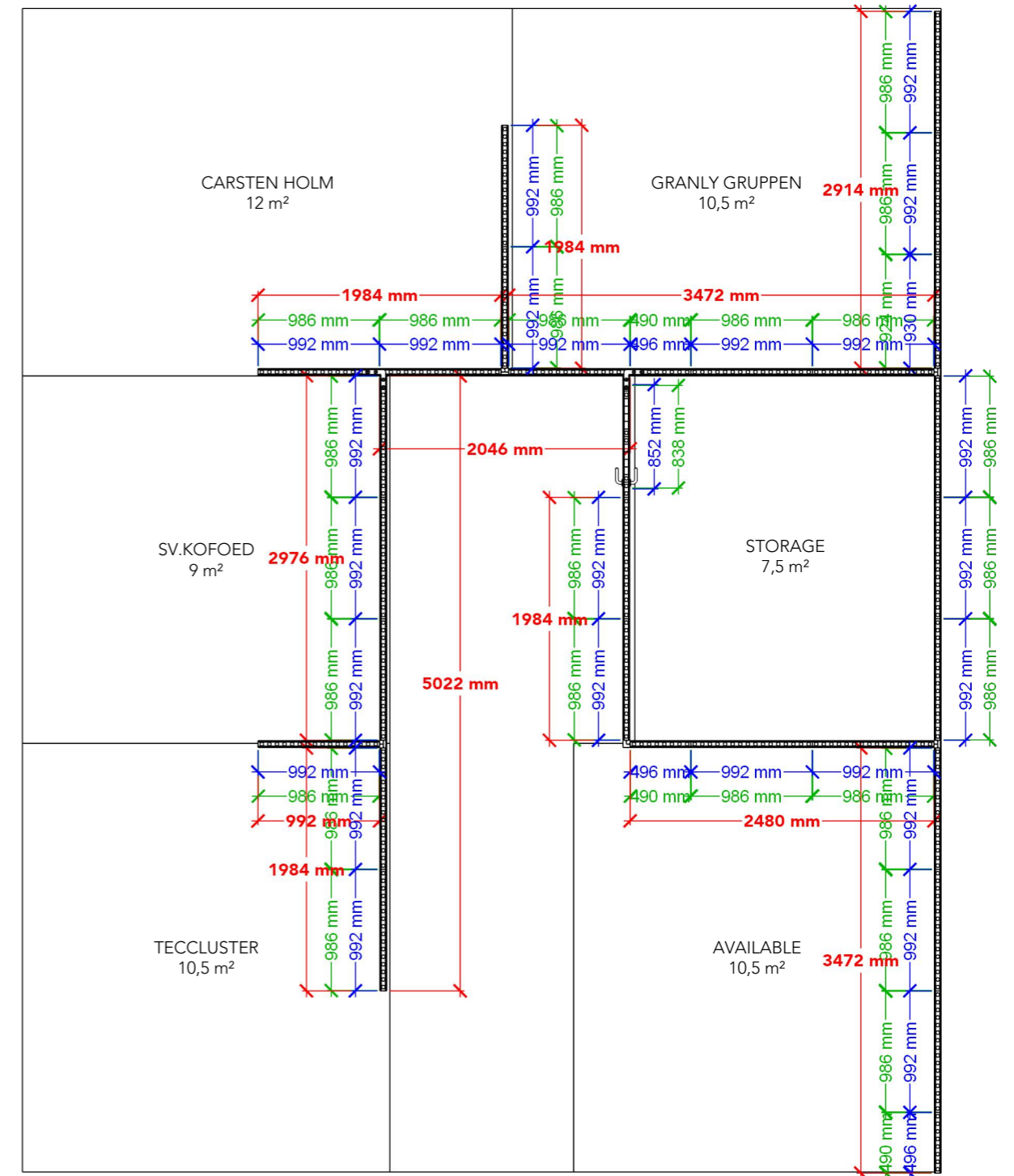
B04-33

- Full size Fabric
- Single Frame Fabric
- Single Frame Panel



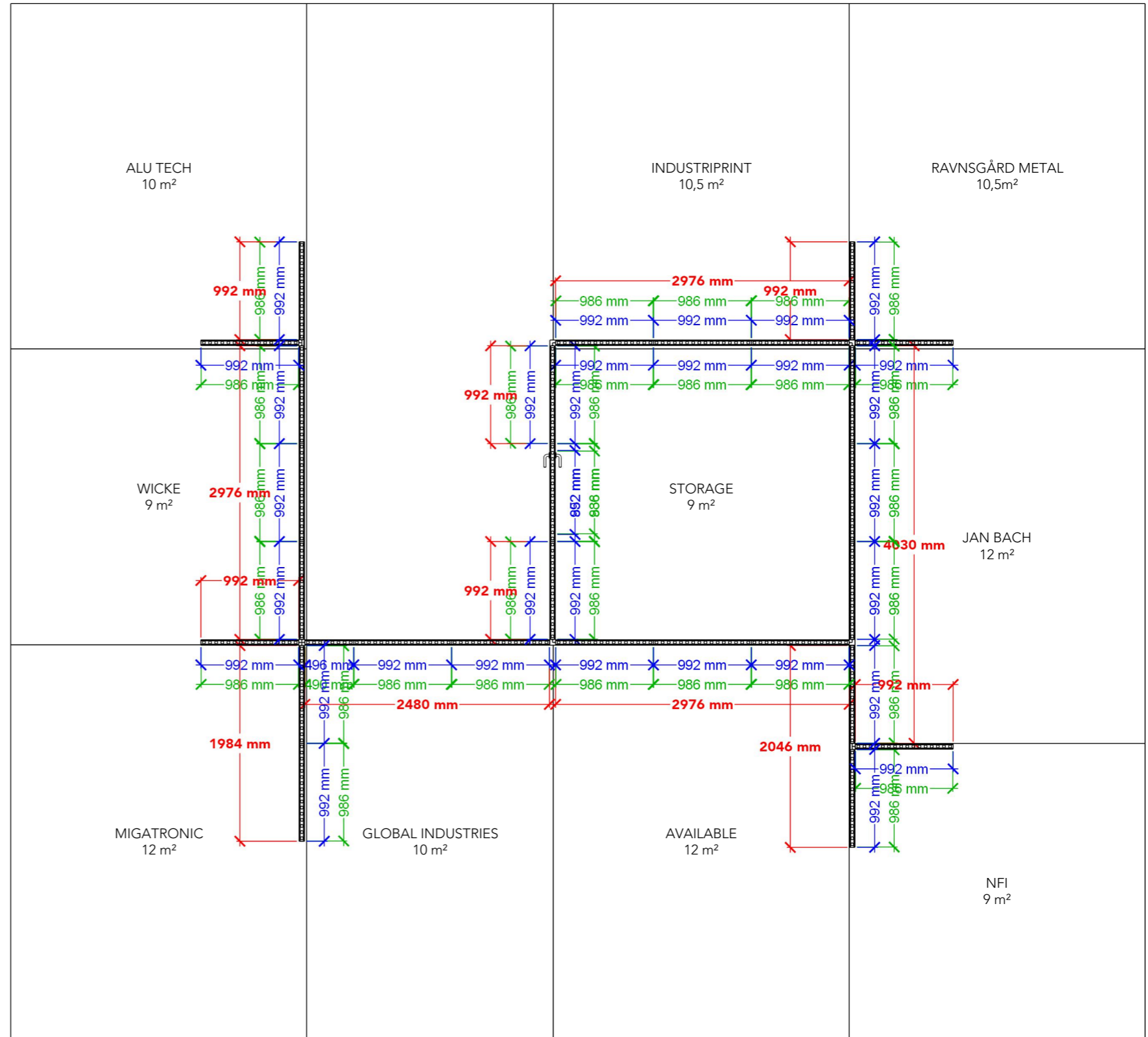
B04-40

- Full size Fabric
- Single Frame Fabric
- Single Frame Panel



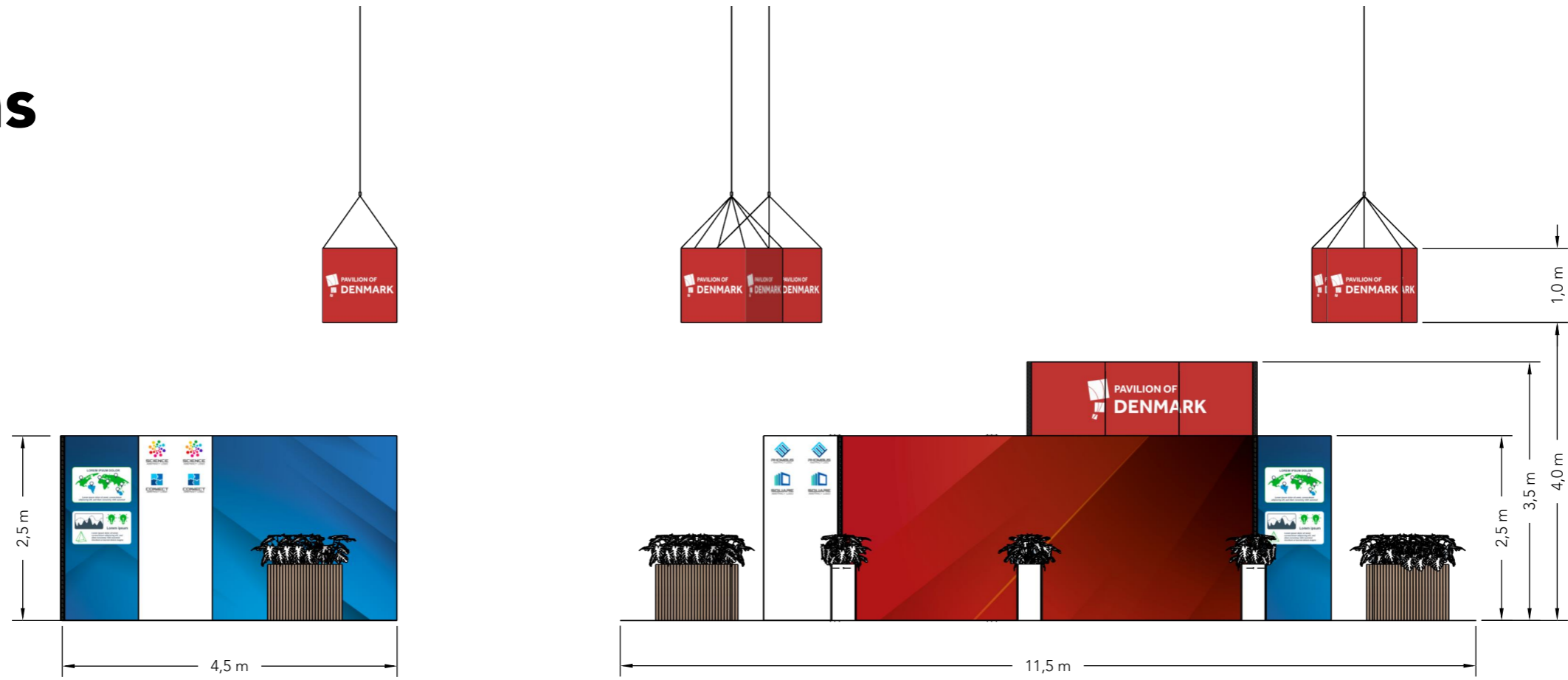
B04-32

- Full size Fabric
- Single Frame Fabric
- Single Frame Panel

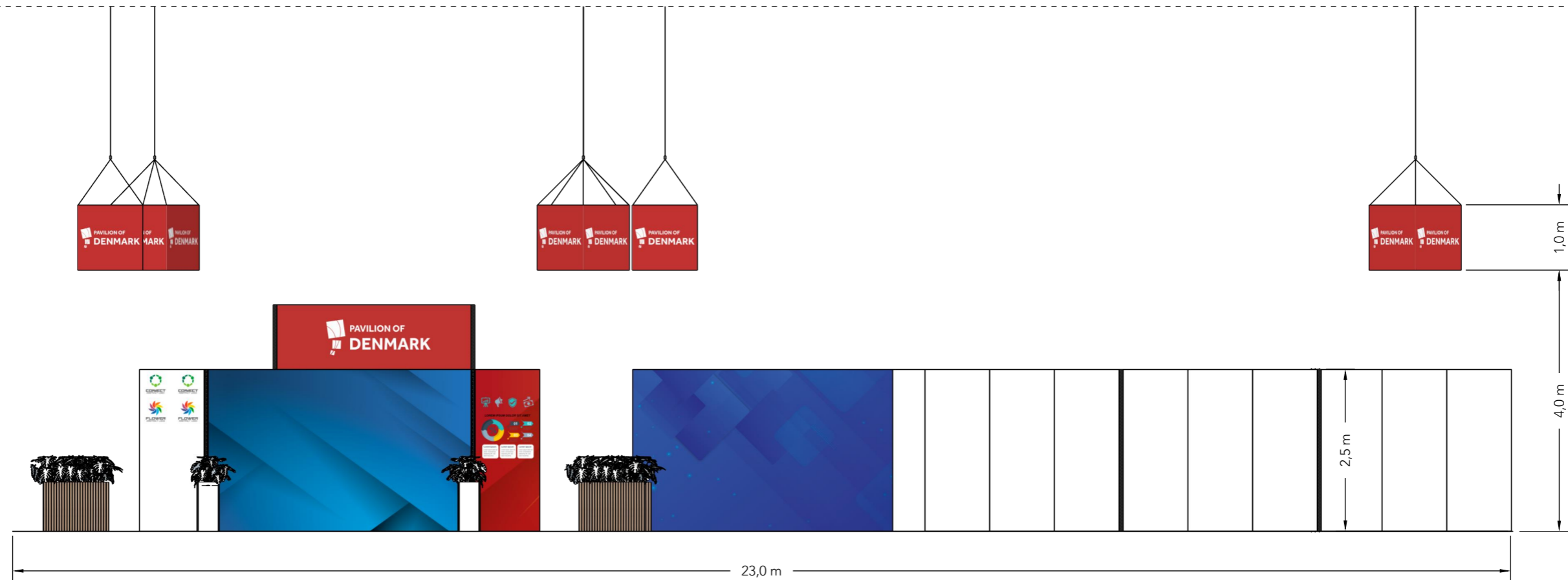


Elevations

Front



Side



Info

Client: DEA Subcontractor
Exhibition: Elmia Subcontractor 2024

Project no.: DSU-ELM-24-11
Designed By: THJ
Hall: B04
Booth: B04-32 - B04-33 - B04-40

Creation Date: 02.07.2024
Revision Date: 29.08.2024
Revision no.: A

Comments:

The drawing is indicative and without responsibility. The drawing is NOT to scale. The stand-builder will have the final call in all decisions regarding stability and security. Some products are only shown to indicate locations, but not the actual product as this product may be changed.
All design is subject to copyright by Compass Fairs A/S and Standesign A/S

